

News from the MWA

Thank you Nebraska!

A hearty thank you to the members of the Omaha Weavers and Spinners Guild and especially to:

Layna Bentley and Kitt Hamersky (Conference Co-Chairs), Cindy Page (Registration/Treasurer), Mary Zicafoose (Galleries/Tours), Eliza Badurina Metz (Guild/Study Group Exhibits), Agneta Gaines (Juried Fashion Show), Glenda Stone (Informal Fashion Show), Sharon Bowles (Teachers/Classes), Sue Kratville (Vendors), and Mary Applegate (Volunteers) for all of their efforts in hosting the 2007 MWA conference *Roots* and ensuring its success.

It was a wonderful conference and enjoyed by all! The pre-conference and conference offerings were diverse, the tours were fun, the keynote address by Margaret Roach Wheeler was remarkable, and the fashion shows were inspiring.

Simply put, this conference will long be remembered, and many new memories were formed as were new friendships while at *Roots*.

Thank you Nebraska for hosting such a terrific conference!

Notes from the Chair...

Let me add my heartfelt thanks to the "Roots" committee for a wonderful, inspiring week in Blair last June: job extremely well done! One's first conference is always such a special experience, and it is great reading the comments of the scholarship recipients and what their opportunity means to them.

But even for those of us who have attended many Midwest conferences over more years than we care to count, each one is a rejuvenating experience and each has

its own flavor and special approach. This is what is so great about moving the site each year with different parts of the Midwest having the opportunity to showcase their special features and cultural history.

So now we move from the Nebraska prairies to the Heartland of Iowa, from looking back at our "roots" to looking within our "hearts" for inspiration.

The Midwest Weavers Conference is **your** conference. Its success depends on **your**

participation and involvement. If you have ever given a program for your guild, you have no doubt discovered you learned more about that subject in putting together your program than anyone did who sat there and listened to it.

When we think about our conference experiences, we think about the classes we took, the speakers we heard, the opportunity to try new equipment, fondle special fibers and yarns, talk to experts in the vendor hall

(Continued on page 2)

Notes from the Chair...continued

(Continued from page 1)

or the classroom, visit with people of like minds over meals, on a bench in a hallway, in a dorm lounge..... etc. We also think about all the beautiful fiber pieces we are inspired by in the special exhibits, teacher and member exhibits, guild and study group exhibits, fashion shows and what others are wearing.

The success of most of these depends on **you** and **your** participation. Everybody attending the conference should be able to contribute to at least one of these exhibits:

- help your guild put together a **guild exhibit**;

- aim to enter something in the **juried fashion show** or, if that's not quite your thing, the non-juried **informal fashion** show;

- if you don't do clothing, plan to enter something in the **members' exhibit** (this is also non-juried);

those of you who weave, can easily contribute to the **swatch swap**—a little extra warp on the loom planned in with any project can yield sufficient fabric to be cut into 28 4" x 4" swatches to inspire someone else.

It's not too early to begin thinking, planning and weaving (or spinning, dyeing, knitting, embellish-

ing...) for your week "in the Heartland" in June 2009.

And perhaps you will even begin to think about the possibility of your guild (or a group of guilds in your area) hosting a future conference.

I'd also like to take this opportunity to say **a very special thank you to Judy Larsen** for her years of service as Chair of the MWA board and for holding the organization together through some challenging years.

Vicki Tardy

Chairman, MWA Board

MWA Board Members and Database & Website Managers

Vicki Tardy, Chairman
4608 Oak Crest Hill Road SE
Iowa City, IA 52240
(319) 351-5208
vtardy@mchsi.com

Bobbi Humphrey-Stephens
Treasurer
9046 N. Regent Road
Bayside, WI 53217
(414) 736-0496
NSTEPHENS24@wi.rr.com

Carolyn Hart, Secretary
Rt. 3 Box 731
Vandalia, IL 62471
(618) 326-8655
chart@swetland.net

Patsy Ek
Board Member
3222 S. Fairington Drive
Bloomington, Indiana 47403
(812) 333-5211
pek@indiana.edu

Judith Larsen
Board Member
N67 W5349 Cedar Court
Cedarburg, WI 53012
(262) 377-5767
ljudithwve@aol.com

John Mullarkey
Web Site Manager
3922 Cleveland
St. Louis, MO 63110
(314) 518-8350
john@malarkycrafts.com

Amy Norris
Database Manager
8742 Teasdale Avenue
St. Louis, MO 63124
(314) 991-5237
amy@amyfibre.com

Start Weaving Now for MWC 2009

The next MWA Conference, *In the HEARTland*, is only sixteen months away. Preconference workshops will begin June 22 in Grinnell, Iowa, followed by the conference on June 25–27.

Fashion shows and exhibits are always highlights of MWA conferences, but their success hinges on member participation.

The *In the HEARTland* steering committee hopes that more of you will participate in these events if you have more time to plan and execute your projects.

To that end, we are pleased to share the following themes for the 2009 fashion shows and exhibits.

Formal Fashion Show—Heart & Soul: Structure & Color in Fashion

Informal Fashion Show—Heartland Treasures

Guild Exhibits—Heart to Heart: Fiber Arts We Share with Others

Members' Exhibit—Heart



in Hand

Categories:

- Handspun—Heartstrings
- Household Items—Home Is Where the Heart Is
- Clothing—Wearing Our Hearts on Our Sleeves
- Felting—Heartfelt Expression
- Weaver's Choice—Wild at Heart

Instructors' Exhibit—Heart of My Heart

Youth Exhibit—Young at Heart

Swatch Swap—Heart's Desire

We are also challenging guilds to interpret the guild exhibit theme—Heart to Heart: Fiber Arts We Share with Others—in terms of a community outreach or service project.

Guilds accepting this *optional* challenge will compete for the *HEARTland* Award, which will be presented in addition to the traditional awards.

We hope this challenge will inspire many guilds to begin working now to reach out to others while practicing their crafts.

Watch this newsletter and the MWA website for more conference information as the clock counts down toward June 2009.

**Only 16
months until
we gather
again at the
next Midwest
Weavers
Conference!**

Minutes from MWA General Meeting

The general meeting of the Midwest Weavers Association was held at 7:00 p.m. on June 22, 2007 in the auditorium of the Fine Arts Building on the campus of Dana College in Blair, Nebraska.

The meeting was called to order by Judy Larsen, Chairman who then welcomed everyone to the conference.

The Nebraska guild was thanked for organizing and running a great conference.

The Board members were introduced.

Amy Norris was introduced as the database manager. She is responsible for keeping the membership lists up to date. Everyone was asked to send any change of address and their dues to Amy so the list can be updated.

Judy explained the time frame for dues. Dues will be due in January, 2008 and will be for the calendar years 2008 and 2009.

John Mullarkey was introduced as the new web site manager. Everyone was

asked to please send information on guild calendars, fiber shows, workshops, prize winners, etc. The website is www.midwestweavers.org.

Vicki introduced the scholarship winners. The Jack Baker Scholarship was awarded to Linda Jurkiewicz. Midwest Weavers Association registration scholarships were awarded to Pegi Bevins, Marcia Little, Ann Maxvill, and Carol McNamara.

Patsy gave a report on the newsletter. The goal is to have two newsletters per year. Please send any information on guilds and events so they can be included in the newsletter. Thank you to Amy Norris for formatting, printing and mailing the newsletters.

Bobbie gave a treasurer's report. Expenditures were for awards, newsletters, database, scholarships, website and the conference. The current balance in the account is \$89,121.94. We have to keep enough funds to cover any major catastrophe.

We now have conference guidelines available to future hosts of conferences. We still need a host for 2011.

Nancy Franz, representing the nominating committee, nominated Bobbie Humphrey-Stephens, treasurer, and Vicki Tardy to continue on the board. Craig Hart moved we accept the nominations elect by acclamation. The motion was seconded and approved.

Betty Huttner and Linda Ryden were introduced. The Iowa Federation of Weavers and Spinners will host the 2009 conference in Grinnell, Iowa. The theme of the conference will be "In the Heartland". The keynote speaker will be Madelyn van der Hoogt.

The MWA Board will host a leadership breakfast on Saturday at 7:30 a.m. in the Presidents Room off of the main dining room.

The meeting was adjourned at 7:30 p.m.

The next MWA General Meeting will be held at the Midwest Weavers Conference in 2009 at Grinnell, IA. However, you can always contact any member of the Board with your comments or concerns.

2009 Swatch Swap - Heart's Desire

Be an early bird and weave for the swatch swap for the Midwest Weavers' Conference 2009.

Put on a little longer warp for your next project and you will have your samples made in plenty of time for the exchange.

The samples should be at least 4" x 4" or large enough to show one pattern repeat.

The categories will be

- weaving - four shafts or less
- weaving - five shafts or more.

Twenty-eight samples will be needed for



each entry and an information sheet will be sent to you on request after the conference schedule is released.

For those of you who are not able to attend the conference an opportunity to participate in the swatch swap is being offered and will be com-

pleted by mail.

What fun to get twenty-eight different samples in exchange for your efforts.

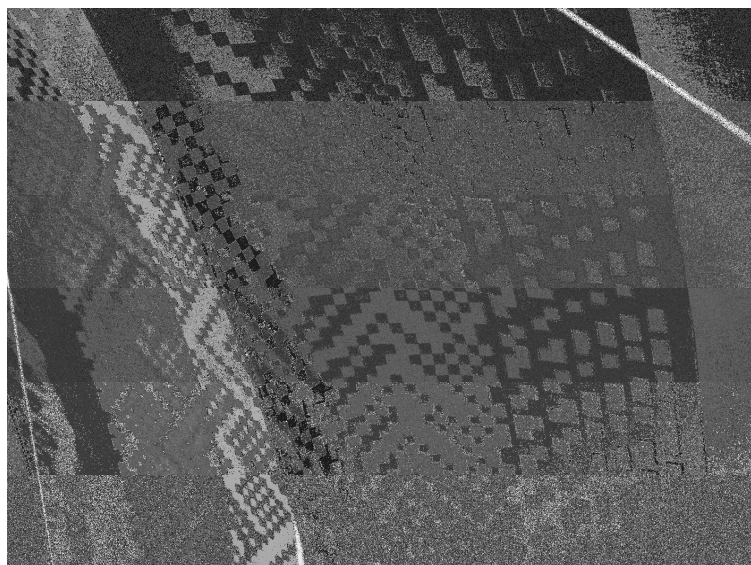
Send questions to Nancy Granner at ngranner@mchsi.com



Banners!

For those of you who attended *Roots* in 2007, we're sure you noticed the striking banners that were displayed outside the buildings where conference activities took place.

This was a terrific idea, and you can look forward to seeing the banners at future MWA conferences. Thank you Nebraska for making these banners part of the MWA tradition!



close up of banner pattern

Award Winners from *Roots*

"Field of Dreams" Guild/Study Group Awards

Margaret O'Shaughnessy Award – Sand County Weavers, Central Wisconsin, Handwoven vegetables; \$200

2nd Place – Wildwood Weavers, Nebraska City, NE; \$100

3rd Place – Valley Weavers & Spinners, Quad Cities, IA; Patriotic theme; \$75



"Growth" Members' Exhibit

Participants came from Iowa, Illinois, Indiana, Kansas, Minnesota, Missouri, Nebraska, Ohio, Texas, and Wisconsin.

Elsie Bell Award - Lisa Payne, Fishers, IN; \$100; "Sunset at Lake Wawasee" scarf made of silk & merino handspun with natural dyes.

Libbie Crawford Award – Sharon Vandenack, Lincoln, NE; \$150; "November's Prairie" wall hanging of hand-dyed silk & brass wire double weave & clasped weft.

Complex Weavers Award – Rossanna White, Nixa, MO; Recognition; "Meandering" Handpainted warp 60/2 silk weft 120/2 silk & metallic; 16 shaft braided twill

Handwoven Magazine's Weaving for the Home Award – Recognition in Handwoven magazine; Claire Ehrenberger – Schuyler, NE; "Squares and Triangles" pique – 16 shafts upholstery fabric on antique chairs.

Chuck Sutton Memorial Award – Agneta Gaines, Fort Calhoun, NE; \$100; "Corn" - twill with inlay wall hanging

First Place in Categories:

Rooted in Tradition – Jeanette Bauer, Iowa City, IA; \$50; "Reeds and Rushes" interpretation of the shore line in Sweden

Crop Rotation – Louise Hoover, Greenwood, IN; \$50; "Vest" white woven hand spun wool vest with knit trim.

Waves of Grain – Rossanna White, Nixa, MO; \$50; "Meandering" Handpainted warp 60/2 silk, weft 120/2 silk & metallic, 16 shaft braided twill

Nature's Palette – Vanessa Kessler, Sheboygan, WI; \$50; "Waves of Weaving" card woven necklace

Furrows and Fields – Jean Jack, Girard, KS; \$50; "Scarf" warp painted hand-woven shibori scarf.

Seedlings and Sprouts – Janine Sandstedt, Omaha, NE; \$50; "Omaha Belt" card woven of 3/2 perle cotton.

Cross Pollination – Rossanna White, Nixa, MO; \$50; "Abundant Harvest" Handpainted warp 30/2 silk & fine cashmere, 15 shaft advancing twill

Bumper Crop – Kitt Hamersky, Omaha, NE; \$50; "Trio of Scarves" 3 point twill scarves with painted warp



"Prairie Seasons" Fashion Show Awards

Margaret Grant Award – Karen York, Clinton, WI; \$125; "Coat of Many Colors" - jacket with inlay & ultrasuede trim

Carolyn Lewis Memorial Award – Kay Lange, Fontana, WI; \$100 Gift certificate; "Anam Cara" Woven jacket and hat with knitted & felted flowers

Prairie Award – (Call for entries) – Mary Brownell, Green Bay, WI; \$125; "Fire Jacket" - Plain weave jacket with hand-dyed warp, Merino wool tape (Tagliantelli).

Margaret's Choice – (Judge's choice) – Alie Thompson, Harvard, IL; \$100; "A Dash of Curry" - Jacket woven of 8 shaft Dornick twill, ultrasuede edging

MWA Selection – Vicki Tardy, Iowa City, IA; \$100; "Black on Black" Shawl of 8 shafts extended manifold twill - silk

"AdDressing Your Roots" Informal Fashion Presentation

Vicki Tardy, Iowa City, IA - Shadow weave patchwork jacket; Donation gift from Elda Kohls;

William Green, Hamburg, IA – handwoven scarf; Donation gift from Habu

**Congratulations,
and thank you to
everyone who
entered their pieces
in *Roots* exhibits.**

In 2005 the general membership voted for annual dues to help defray the cost of newsletter mailings and web site maintenance.

These dues are for 2008-09.

Dues are collected the first of January every even numbered year and run through the end of the next/odd numbered year.

MWA Membership Dues for 2008 and 2009

Name _____

Address _____

Telephone _____

Email _____

Name and address of guild(s) you participate in _____

Amount enclosed. Please make checks payable to "Midwest Weavers Association".....\$10.00

Please send this form and your check to:

Amy Norris
8742 Teasdale Avenue
St. Louis, MO 63124

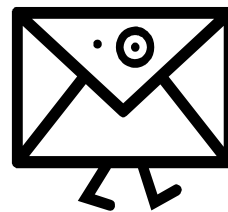
All paid members will automatically receive a 2009 "in the Heartland" conference book at no additional charge.

Address Changes

If you move, please let us know by sending your new mailing information to:

Amy Norris
8742 Teasdale Avenue
St. Louis, MO 63124

or send her an e-mail at: amy@amyfibre.com. Thank you!



Midwest Weavers Association Web Site

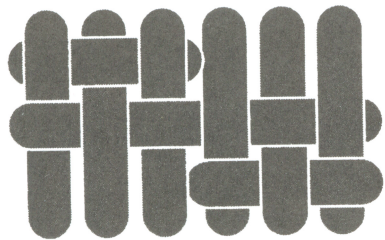
We hope you will visit MWA's web site at www.midwestweavers.org often.

You'll be able to:

- learn about upcoming fiber events that are taking place near you
- read past MWA newsletters
- join MWA
- change your mailing address with MWA
- learn about the 2009 MWA conference *In the HEARTland*

and more.

www.midwestweavers.org



Midwest Weavers
ASSOCIATION, INC.

The official newsletter of

Midwest Weavers' Association
c/o Amy Norris
8742 Teasdale Avenue
St. Louis, Missouri 63124-1926

E-mail: amy@amyfibre.com

