

News from the MWA

Notes from the Chair...

THANK YOU!

THANK YOU!

THANK YOU!

.....to Iowa for all the hard work and careful planning that went into the *In the HEARTland* conference; to the speakers and teachers that shared their knowledge and tricks with us; the vendors that provided us with new equipment, books, yarns and fibers to purchase; and to all of you who brought your wonderful creations to share in the various exhibits and fashion show.

.....to those guilds and state organizations that have stepped up and offered to host future conferences. We are delighted to have hosts through the 2017 conference: 2013 host is the

Kansas Alliance of Weavers and Spinners (KAWS), 2015 host is the Weavers Guild of Minnesota (WGM), and 2017 host is the Spinners & Weavers of Indiana Fiber & Textiles (SWIFT). Please keep in touch with the board and let us know any way we can be of assistance.

.....and to the group in the Upper Peninsula of Michigan that is making plans for *Northern Wefts* 2011 conference. It's not too early for us to begin plans for guild exhibits and creating items for the member exhibit and fashion show. How quickly a year passes and we have all those inspiring themes to work with!

Wishing you all a cozy winter with plenty of time for creating wonderful things with fiber,

Vicki Tardy
MWA Board Chair

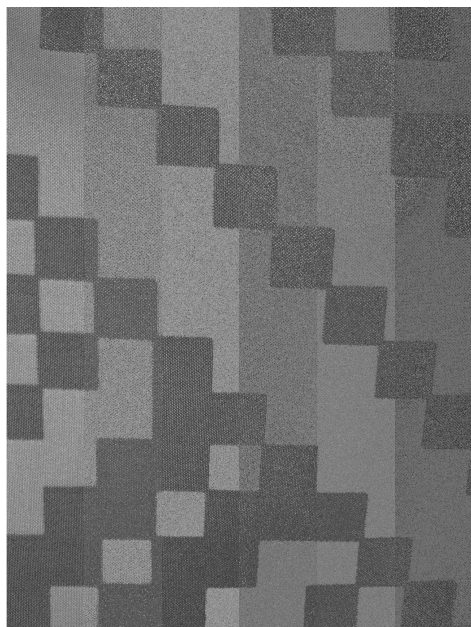


Table of Contents

Notes from the Chair	1
News.....	2
Board Members.....	2
2011 Conference	3
2009 Awards	4
Fiber Artist of Distinction	5
2009 Scholarships	6
Tips & Tricks.....	7
Minutes of General Meeting	8
Renewal Form	9

NEWS

**Thank you Judy
Larsen for all
your years of
service on the
MWA Board!**

Thank You, Iowa!

Kudos to the Iowa Federation of Hand-weavers and Spinners for hosting the 2009 MWA conference, *In the HEARTland!* It was a terrific conference and provided fiber enthusiasts with a wide range of classes to choose from. The exhibits were inspiring as was the fashion show. It takes a lot of effort to host a conference, so don't be bashful in thanking the folks from Iowa for all that they did so the rest of us could thoroughly enjoy ourselves. Thank you, Iowa, for hosting such a fabulous conference!

Thanks Judy!

We would like to extend heartfelt thanks to Judy Larsen for her many years of hard

work and dedication to MWA. She saw MWA through some difficult times, and it wouldn't be the vibrant organization it is today if it weren't for her efforts. Thank you, Judy!

Welcome Betty!

Betty Huttner has graciously agreed to fill-out Judy Larsen's term as an MWA board member. Many of you already know Betty—she was one of the co-chairs of the 2009 *In the HEARTland* conference. We appreciate Betty's willingness to serve as a board member and look forward to working with her as we continue to strive to make MWA a stronger organization.

MWA Board Members and Database & Website Managers

Vicki Tardy
Chair
4608 Oak Crest Hill Road SE
Iowa City, IA 52240
(319) 351-5208
vtardy@mchsi.com

Bobbi Humphrey-Stephens
Treasurer
9046 N. Regent Road
Bayside, WI 53217
(414) 736-0496
NSTEPHENS24@wi.rr.com

Carolyn Hart
Secretary
Rt. 3 Box 731
Vandalia, IL 62471
(618) 326-8655
chart@swetland.net

Patsy Ek
Newsletter Editor
3222 S. Fairington Drive
Bloomington, Indiana 47403
(812) 333-5211
patsy_fiberholic@yahoo.com

Betty Huttner
Scholarship Coordinator
5 Glendale Circle
Iowa City, IA 52245
(319) 338-6146
icliz@yahoo.com

John Mullarkey
Web Site Manager
3932 Cleveland
St. Louis, MO 63110
(314) 518-8350
john@malarkycrafts.com

Amy Norris
Database Manager
8742 Teasdale Avenue
St. Louis, MO 63124
(314) 991-5237
amy@amyfibre.com



Looking forward—2011 MWA Conference

**Make plans now
to join us in the
beautiful Upper
Peninsula of
Michigan**

An Invitation to *Northern Wefts*

Natural beauty dominates our landscape. We are surrounded by the great inland seas that are modestly called lakes. Our seasons are important to us and bring variety to our days. Inspiration abounds whether you are a weaver, artist, craftsman, author, philosopher or sportsman. The desire to create seems to grow the longer we are here. Come and be inspired by our awesome beauty, enjoy the peace and solitude, join the fun of finding small treasures on our shores, and delight in the tastes of our pasties and thimbleberries. Welcome to the Upper Peninsula of Michigan.

Keynote Speaker

We're pleased to announce that Sheila O'Hara will be the keynote speaker at *Northern Wefts*.

Fashion Show- Non-Juried "Superior Seasons"

On Superior our winters are snow white, the skies are the clearest blue, but our ice can be vivid blue and turquoise. Spring displays the lightest of greens in the tiny leaves cautiously emerging. The delicate pink of lady-slippers and spring beauties tease us with their promise of color and life. The warmth of summer is apparent in the fields of daisies, hawkweed and buttercups. The lovely lavender of lupine and phlox line the ribbons of deserted

highways. While fall embraces us with the rich vibrant reds, golds, and deep purples before we lose all color again. And throughout it all the towering pine and spruce, their green so dark, watch over all, sheltering us from loneliness. Create hand-woven or felted garments and fashion accessories to walk the runway.

Guild Exhibits "Aurora Borealis"-- the northern lights, ever changing, always in motion, a whisper of color and never the same.

Special Exhibit "Re-use, Re-new and Re-cycle"-- use any medium to demonstrate how easy it is to be "green."

(Continued on page 8)



Awards from 2009 Conference

**Congratulations
to all the award
winners!**

Complex Weavers Award – Peggy Baldwin, “Dress Bag” – Yellow, green, purple and pink envelope purse

HGA Award – Marcia Kosmerchok, “Ripples” – Cream yardage

Interweave Press – Louise French, “Seta Bianco Piazze” – Overshot Silk Scarf

Elsie Bell Award – Lisa McLane, “Shawn’s Vest” – Woven man’s vest

Libby Crawford Award – Louise French, “Popsicle Twist”

Margaret Grant Award – Karen York, “Complementary Compliments” – Black jacket with color band on left front and right sleeve

In the HEARTland Awards:

Wild At Heart

1st Place: Ann Massmore, “It’s Knot Your Grandma’s Weaving” – Basketweave shoelaces

2nd Place: Peggy Baldwin, “Trouble in Birdland” – Wall piece with birds and insect in double faced card weaving

HM: Deborah Zeitler, “Iowa Geode” – Hand-dyed and woven wool/cotton sculpture

HM: Ann Rogers, “Wisconsin Badger Fan” – Stuffed toy wearing a tam-o’shanter

Heartfelt Expressions

1st Place: Mary Boulet, “My Hidden Heart” – Embellished felt box

2nd Place: Gail Ray, “Woven Runner” – Hand-dyed and felted woven runner

HM: Gisela McDonald, “Valentine” – Wet-felted cape with long tails

Heartstrings

1st Place: Kris Stark, “Domino Delight” – Hand-spun, dyed & modular knitted vest

2nd Place: Vicki Tardy, “Rhubarb Torte” – Hand-spun woven throw

Home is Where the Heart Is

1st Place: Anita Grant, “Bedroom Bench” – Pique woven double weave upholstered bench

2nd Place: Ann Maxvill, “Federal Knot” – Dresser scarf using two weft colors

HM: Peggy Baldwin, “Table Runner” – Blue & green linen/cotton table runner

HM: Wendy Stevens, “Christening Blanket” – Small scale Norwegian tapestry reproduction

Wearing Our Hearts on Our Sleeves

1st Place: Elizabeth Huttner, “Lauren’s Christening Gown & Cap” – Huck lace christening gown

2nd Place: Ann Maxvill, “Pink Salad” – Hand-dyed silk woven scarf with twisted

fringe

HM: Jean Jack, “Scarf” – Painted warp in aqua, gold, violet. Shirbori over-dye with twisted fringe

Popular Choice Fashion Show Awards

1st Place: Christy Berry, “Victorian Walking Skirt” -- Gray warp and yellow weft. 20/2 perle cotton, plain weave. 8 yards of fabric woven. Linen bias tape trim on hem. Extra pieces left over from cutting the gores were used to make the ruffles at the hem, so there was virtually no wasted fabric! Inspired by a Bobbi Irwin workshop on weaving iridescence. Original design.

2nd Place: Diane May, “Alaskan Evening” -- Long skirt and vest. Rayon warp, cotton weft. Plain weave with “walked” center panel. Vest trimmed with black suede, beading on lapels and back center panel. Skirt: original design, vest: adapted Burda pattern. Diane wore it for the first time for a formal evening on her and her husband’s 40th Anniversary Alaskan Cruise. The vest also can be worn with a camisole or a blouse for cooler evenings making it very versatile for traveling.

(Continued on page 5)

(Continued from page 4)

3rd Place: Collyer Ekholm, "Shaman's Vest" -- Cotton and silk. A variety of weave structures for the panels, Japanese braids done on the Marudai, Takadai and Ayatakedai. Braids couched onto fabric. Commercial pattern: Tibetan Panel Coat. The bright colors represent the theme of fire and of dragons, hence the scales in the cloth and the serpentine form of the braids.

Guild Exhibit Awards

1st Place: Wildwood Weavers, "The Heartland's Field of Fibers"--A beautiful display of fibers grown and woven in the Heartland. Who knew that corn and soy could be so beautiful!

2nd Place: Omaha Weavers and Spinners, "Out of the Box"--A very creative way to involve community programs and so cleverly displayed. Paper weavings done by several groups were then interpreted

as woven towels. The towels and paper weavings were presented on/ and out of cardboard boxes.

3rd Place: Weaving Indiana--This guild wove beautiful baby blankets to share with their community and the way that their samples and notes were displayed gave us all an opportunity to see the work that went into each one.

HEARTland Award:

Weaving Indiana--A great deal of love was evident in this community project.

Popular Choice: Valley Weavers and Spinners, "Sharing a Common Thread"--The color Blue Iris was the connecting thread to all the items in this display. A beautiful way to showcase the diverse styles of the guild members.



FIBER ARTIST OF DISTINCTION

We have many talented weavers in MWA and have established a new award to honor them. This award is based on a point system, and when a weaver has accumulated 25 points, they will receive the Fiber Artist of Distinction Award. Points will be earned by receiving either 1st place or a named award (3 points), 2nd place (2 points), or 3rd place or honorable mention (1 point) at MWA conference competitions. Once a person has received the Fiber Artist of Distinction Award, their name will be published in the next MWA newsletter and will be added to the honor roll that will be posted on MWA's web site.

Guild Corner

**We need
your help!**

So folks know about guild activities, we would like to highlight a few guilds in each newsletter, but we need your help.

Please send a brief paragraph to MWA board member Patsy Ek (patsy_fiberholic@yahoo.com) describing programs and other activities your guild is involved in, upcoming workshops, time and place of your guild meetings (who knows, one of us

may happen to be in your neighborhood on the day of your meetings).

We also highlight Midwest area Guilds on the MWA website. Check out what we're saying about your Guild and let us know if we need to make any revisions.

What better way to spread the word about what your guild does?

2009 MWA Scholarship Recipients

MWA was pleased to award five scholarships to help defray costs to attend *In the HEARTland*. Kathleen Glaser, of Indiana, received the Jack Baker Memorial Scholarship, which is a full scholarship to a new weaver that covers registration and room and board costs. MWA Registration Scholarships were awarded to Christy Berry, of Missouri, Jan Fitzpatrick, of Iowa, Middy Hoffein, of Ohio, and Sarah Townsend, of Indiana. A few thoughts they shared after the conference . . .



I would like to thank you and the entire board for the opportunity to attend the Midwest Weaver's Conference on the Jack Baker Scholarship. What a wonderful experience!

My learning experience actually started in the car. I had several hours to pick the brain of an experienced weaver. When I arrived at the conference, I was impressed with the friendliness of the weaving community. Everyone was willing to talk to the rookie and answer questions that I am sure were very basic for them. I took full advantage of the experts around me.

My favorite workshop was the inkle weaving workshop. Jane Patrick was an excellent teacher and we accomplished quite a bit in one day. I purchased an inkle loom and I intend to loan it to the Fashion and Textiles class at school to introduce students to weaving. I have also made arrangements with the fifth grade teacher to do some demonstrating on a table loom and have the students weave a wall hanging for their classroom.

I especially enjoyed the exhibits and the fashion show. It opened up a new world of weaving and encouraged me to continue to learn new skills and techniques. I realize that I am in the infancy of weaving life! What a won-

derful journey it will be to learn all that is ahead of me.

Now that I have attended one conference, I am hooked. I will attend the conference in the UP and plan a family vacation around it. Hopefully, when the conference comes to Indiana in the future, I can contribute in some way to the conference's success.

Thank you again. Attending my first Midwest Weaver's Conference is an experience I will never forget.

~Kathleen Glaser



I was honored to receive a scholarship to Midwest Weavers Conference in Grinnell. I took an advanced rigid heddle weaving class with Jane Patrick and Weaving with Kids with Becky Kobos. Both of these classes gave me ideas for my own weaving but also gave me ideas to use with my students when I become an Elementary school teacher.

What I most loved about the conference was time to talk to other weavers. The camaraderie formed by the weavers from all over the Midwest was so great. The discussions at meals or in the lounge after most things had ended for an evening were enthralling. Many people were talking about cutting into their weaving, what sett to use for dish towels, or how to encourage more young weavers like me. I'm hooked and can't wait for Midwest 2011 in the UP.

~Sarah Townsend

"What I most loved about the conference was time to talk to other weavers."

Tips and Tricks

from *Weaver's Wisdom: 250 Aids to Happier Weaving (Monograph Two)*:

- When warping, particularly with delicate yarn, add a few extra threads to the warp. Then when threading, let one of the extras fall back of the loom at intervals across the warp. Should a repair be necessary, the thread is already warped and ready for use.
- For speed in winding a single color warp, wind two or more strands at the same time from as many cones of yarn. The warp will be wound twice as fast and should the dye lots vary, the color change will not show in the warp.
- When warping with more than two ends, place a reed across two chairs over the cones. Thread the ends through the reed to keep the threads feeding vertically and to avoid tangling.
- For sectional beaming with a very lumpy yarn, use warping sticks between the rows of pegs across the width of the warp.
- Use metal [or wood] Venetian blind slats instead of paper between the layers of thread when beaming. They may be cut to any desired length with shears and the ends rounded and easily smoothed.
- When using warp sticks, maximum support is achieved if the later layers are placed directly over the first group of sticks.
- Use a stick shuttle to hold down a treadle when three feet are needed.
- Beating after changing the shed tends to spread a fabric; beating before changing may cause excessive pulling in.
- In order to weave a true 50-50 tabby, a fast beat will have more effect than a slower double beat and cause less wear on the warp.
- When sewing the ends of a woven piece to prevent raveling, the sewing machine should be set for short stitches and the material should be stretched while stitching.
- Silk thread, with its great elasticity, is best for tailoring yardage of hand-spun yarns.
- A worsted cloth should be set by steaming before washing. This helps prevent contraction of the fibers and consequent shrinkage. The texture of the surface is also retained.
- Fasten a small knitter's row counter to the castle for keeping track of repeats, etc.
- In dyeing, a strong color can be grayed by adding a weak dye solution of its complement.
- A blending of colors close in value often looks better in weaving than use of only one color.
- Check the accuracy of your tape measure. Plastic ones stretch.

Do you have a tip to share? Send it to Patsy Ek for inclusion in future newsletters!



(Continued from page 3)

Member's Exhibits "Natural Elements"

Wood--(The strength of our craft). Fabric, Rugs, Linens

Water--(Use it) All Felting - wet, needle, knitted or woven and felted pieces

Wind--(Things to wear) Clothing, Hats, Scarves

Weft--(Creative threads) Tapestry, Painted wefts and warps, Three dimensional, Handspun wefts

Wondrous Copper, Agates, Greenstone--(Any fiber) jewelry, wire weaving, beading, knitting, embellishments

Midwest Weavers Association Web Site

- Want to know about upcoming fiber events that are taking place near you?
- Read past MWA newsletters?
- Join MWA? Or renew your membership?
- Change your mailing address with MWA?
- Contact a Board member with your thoughts?

Learn about the 2011 MWA conference *Northern Wefts*? Answers to these questions and more can be found on MWA's web site www.midwestweavers.org. We hope you'll visit it often!

We also hope you'll send in info about fiber activities happening in your area, so that we can post the details on the web site and others will be able to participate in them.

Minutes of the MWA General Meeting

The general meeting of the Midwest Weavers Association was held at 7:30 p.m. on June 27, 2009 in Harris Center Cinema on the campus of Grinnell College in Grinnell, Iowa.

The meeting was called to order by Vicki Tardy, Chair, who welcomed everyone to Iowa.

Carolyn Hart read the minutes from the last meeting. Vicki asked for a motion to approve the minutes. The motion was made, seconded, and approved.

Bobbie Humphrey-Stephens gave the treasurer's report. The balance in the treasury is \$92,512.55.

Judy Larsen gave the scholarship report. There

were 13 applications for scholarships. The Jack Baker scholarship was awarded to Kathleen Glasser. Midwest Weavers Association registration scholarships were awarded to Sarah Townsend, Christy Berry, Jan Fitzpatrick and Middy Hoffein.

Vicki explained membership dues. Dues are \$5 per year collected every two years in January of the even numbered years. Dues will be collected in January, 2010 for the years 2010 and 2011. The dues cover the newsletters, scholarships, and registration books for the next conference.

Marggy Grace nominated Carolyn Hart for secretary. Vicki asked for nominations from the floor. Vicki asked for a motion to accept the nomination. The motion was

made, seconded, and approved.

Judy Larsen resigned from the Board. Bobbie presented Judy with a thank you gift on behalf of the Board for all of her hard work and dedication to MWA.

The board appointed Betty Huttner to fill Judy's unexpired term.

Vicki thanked Linda Ryden and Betty Huttner, co-chairs, and the rest of the conference committee for their work to make this a great conference.

Mary Brownell, Jenny Workman and Jean Lind invited everyone to the 2011 conference in Houghton/Hancock in the upper peninsula of Michigan.

The meeting was adjourned at 7:50 p.m.

Please feel free to contact a Board member at any time to share your thoughts and ideas regarding MWA. Contact information is on page 2 of this newsletter, and on our webpage.

These dues are for 2010-2011. Dues are collected the first of January every even numbered year and run through the end of the next/odd numbered year.

MWA Membership Dues for 2010 and 2011

Name _____

Address _____

Telephone _____

Email _____

Name and address of guild(s) you participate in _____

Please make checks payable to "Midwest Weavers Association".....\$10.00

Please send this form and your check to:

Amy Norris

8742 Teasdale Avenue

St. Louis, MO 63124

☐ Please do not include my name, city, and state on the on-line membership list.

Membership Dues

Membership dues are collected on a biennial basis. A call for them goes out in January of even numbered years, and the dues carry you through the end of the next odd numbered year, which is also a conference year. These dues help defray the cost of conference scholarships, newsletter mailings, and web site maintenance. Benefits of being a member of MWA include receiving MWA newsletters and *automatically receiving a free registration booklet for the next conference.*

To facilitate networking between fellow fiber enthusiasts, we'll be including MWA's membership list on our web site. The list will only include a person's name, city, and state, and will not include any personal contact information. We'll automatically include your information on the web site unless you opt out now or sometime in the future (you can either check the box on the membership dues renewal form or e-mail John Mullarkey, the web site manager).

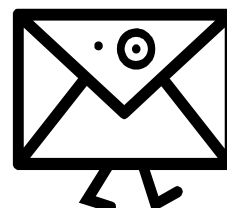
Please complete the form above and return it with your check for \$10. These dues are for 2010 and 2011. Thank you. Hope to see you at Midwest 2011 *Northern Wefts* in Michigan!

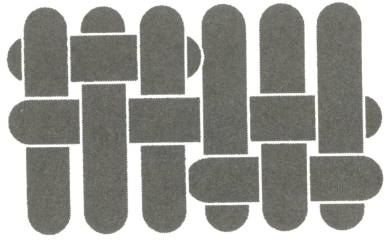
Address Changes

If you move, please let us know by sending your new mailing information to:

Amy Norris
8742 Teasdale Avenue
St. Louis, MO 63124

or send her an e-mail at: amy@amyfibre.com. Thank you!





Midwest Weavers
ASSOCIATION, INC.

The official newsletter of

Midwest Weavers' Association
c/o Amy Norris
8742 Teasdale Avenue
St. Louis, Missouri 63124-1926

E-mail: amy@amyfibre.com

