

Notes from the Chair...

Learning is an important part of life. This is something that was ingrained into me from infancy—the joy of learning, to do your best in school, try new things, keep an open mind, etc.

One of the things I have always loved about weaving is the fact that no matter how long I've been weaving or how much I weave, I will never know all there is to know or have tried all the possibilities.

With each new project, I learn something new about color, the potential of a particular structure, or the characteristics of a new fiber. However, that is all building upon a base of knowledge that has been growing for many years.

A few weeks ago, 11 members of my guild embarked on learning a technique that was completely new to all of us—ply-split braiding.

We could have listened to those voices in our heads saying, “I need another craft like I need another hole in my head” or “I don't have the time to pursue the crafts I already know without taking on something new” or “what would I ever DO with that?” or whatever.

But instead, we let other voices come through stronger: “Those folks in the booth from Minnesota at Midwest last summer seemed to be having such fun with it” or “It will be a fun weekend with guild friends” or “maybe it's just the technique I need for...”

Many of us are a bit “over the hill” and our eyes and hands don't work as well as they once did, and our brains don't pick up new things as quickly as in the past.

All that being said, I have not seen anything in recent months (maybe years) to equal the fun and enthusiasm among

members as was obvious those two days. The group has continued to meet every other week since the workshop to help each other with problems, solutions and ideas.

We are planning a special exhibit of what we have made thus far for the Iowa State Fair in August and are preparing to offer a class for other members of our guild and community come fall.

We have been energized, stimulated, and motivated by the excitement of learning something new!

The primary mission of Midwest Weavers Association is to promote learning which we do through our biennial conferences. What a wonderful opportunity they are for each of us to expand the knowledge of crafts we already know and to learn something totally new!

To that end we hope you are beginning to plan your trip to the UP for “Northern

(Continued on page 2)

Table of Contents

Notes from the Chair	1
In Memoriam.....	2
Board Members.....	2
2011 Conference	3
Upcoming Fiber Events.....	4
A Brief History of MWA	5
Scholarships	6
Online Registration.....	6
Fiber Artist of Distinction	7
Address Change?.....	7

In Memoriam

Ila Roberts had a great love for weaving and for fiber arts in general. She was a founding member of her local guild and was also an avid gardener.

You might have known Ila from MWA conference classes—she was a faithful attendee for many years—or from the many other workshops she participated in.

She was responsible for orchestrating the Swatch Swaps for MWA 2001 and 2003 conferences. Ila always had a kind word of encouragement to new or frustrated weavers and showed us that with patience, anything was possible.

Ila you will be sorely missed.

(Continued from page 1)

Wefts” next summer and embarking on projects for your guild's exhibit and pieces for the member's exhibit, fashion show and/or the special “recycle” exhibit. Don't forget to put an extra half yard of warp on one of those projects for samples for the swatch swap.

Wishing you hours of happy weaving, spinning, dyeing, felting, braiding.... learning!

Vicki Tardy

MWA Board Chair

MWA Board Members and Database & Website Managers

**We are always
happy to hear
from you.
Please feel free
to contact any
member of the
Board with your
comments about
MWA.**

Vicki Tardy
Chair
4608 Oak Crest Hill Road SE
Iowa City, IA 52240
(319) 351-5208
vtardy@mchsi.com

Bobbi Humphrey-Stephens
Treasurer
9046 N. Regent Road
Bayside, WI 53217
(414) 736-0496
NSTEPHENS24@wi.rr.com

Carolyn Hart
Secretary
Rt. 3 Box 731
Vandalia, IL 62471
(618) 326-8655
chart731@frontiernet.net

Patsy Ek
Newsletter Editor
3222 S. Fairington Drive
Bloomington, Indiana 47403
(812) 333-5211
patsy_fiberholic@yahoo.com

Betty Huttner
Scholarship Coordinator
5 Glendale Circle
Iowa City, IA 52245
(319) 338-6146
icliz@inavia.net

John Mullarkey
Web Site Manager
3932 Cleveland
St. Louis, MO 63110
(314) 518-8350
webmaster@midwestweavers.org

Amy Norris
Database Manager
8742 Teasdale Avenue
St. Louis, MO 63124
(314) 991-5237
amy@amyfibre.com

2011 MWA Conference...

the latest about *Northern Wefts*

Two-day workshops will be offered that include Lace Weaves (Vicki Tardy), Japanese Shibori and Shaped Resist (Susan Moran), Hammock Making (Russ Mason), Warp Painting (Su Butler), and learn how to jazz up your fabric with Fun and Funky Fabrics (Robyn Spady).

Maxi sessions include Netting with a Shuttle, Spinning Silk, Birch Bark Basket (Russian), Kimono Kaper, Finger-Controlled Weaves, Knit and Crochet Edge Treatments, Tablet Weaving, Inkle Loom, Warping with a Paddle, Shoe-strings and the Kitchen Sink.

And a large selection of Mini classes will include Viking Bracelets, Silk Painting, Spinning Lock Yarns, Felted Hats, Dying for the Wow, What Color are your

Plaids, Beaded Heart Pin, Web Site Success, and many more.

Those interested in Pre-conference can plan choosing from classes on Felting (Phyllis Fredendall), Double Weave Tapestry Pillows (Anita Mayer), Multiple Warp Weaving on Eight (Sheila O'Hara), Checks, Plaids, and Tartans (Katie Meek), One of a Kind Jacket to Fit You (Mary Sue Fenner), Vibrant Rugs to Beautiful Tapestries (Mary Zickafoose), Spin Knit Nexus (Amy Tyler), and Natural Inspiration (Cameron Taylor-Brown).

The keynote speaker will be Sheila O'Hara and the theme of the non-juried fashion show is "Superior Seasons": On Superior the winters are snow white, the skies are the

clearest blue, but the ice can be vivid blue and turquoise. Spring displays the lightest of greens in the tiny leaves cautiously emerging. The delicate pink of lady-slippers and spring beauties tease us with their promise of color and life. The warmth of summer is apparent in the fields of daisies, hawkweed and buttercups. The lovely lavender of lupine and phlox line the ribbons of deserted highways. While fall embraces the rich vibrant reds, golds, and deep purples before all color is lost again. And throughout it all the towering pine and spruce, their green so dark, watch over all, sheltering all from loneliness. Create hand-woven or felted garments and fashion accessories to walk

(Continued on page 4)

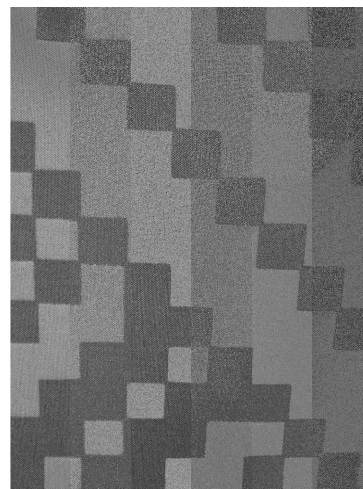
**See you next
summer in the
beautiful Upper
Peninsula of
Michigan**



Northern Wefts
MIDWEST WEAVERS' CONFERENCE 2011
Hancock, MI June 23-25

Upcoming Fiber Events

- **September 4-5, 2010**
World Sheep & Fiber Arts Festival, Bethel, Missouri www.worldsheepfest.com
- **September 10-12, 2010**
Wisconsin Sheep & Wool Festival, Jefferson, Wisconsin
www.wisconsinssheepandwoolfestival.com
- **September 18-19, 2010**
A Wool Gathering, Yellow Springs, Ohio
www.awoolgathering.com
- **September 25-26, 2010**
Fiber in the Park, Earlville, Illinois
www.fiberinthepark.com
- **October 15-16, 2010**
Southern Indiana Fiber Arts Festival, Corydon, Indiana www.southernindianafiberarts.com
- **October 16, 2010**
Interwoven Expressions
9:00 am to 3:00 pm, at Valparaiso's elegant Aberdeen Manor Ballroom, 216 Ballantrae, Valparaiso, Indiana (219-465-7130). Free Admission. Free Parking.
Interwoven Expressions began 26 years ago as an annual sale of the Duneland Weavers Guild of Northwest Indiana. It has matured into a juried fiber arts event of the highest standards. Sale volume for the 6 hr event approaches \$20,000. Participation is limited to artists residing in states that border Lake Michigan. Currently fiber artists from Michigan (Detroit, Kalamazoo, Lansing, Portage), Illinois (Chicago), and Indiana (Indianapolis, Lafayette, as well as northwest Indiana) participate. In addition to weavers, artists exploring felting, silk dying, knitting, crocheting, silk ribbon embroidery, basketry, and handmade paper are represented.
www.interwovenexpressions.com
- **October 24-31, 2010**
Spin-Off Autumn Retreat (SOAR), Lake Delavan, Wisconsin www.interweavesoar.com
- **June 9-12, 2011**
Surface Design Association International Textile Conference, Minneapolis, Minnesota
www surfacedesign.org
- **August 25-28, 2011**
Stitches Midwest 2011, Schaumburg, Illinois
www.knittinguniverse.com



(Continued from page 3)

the runway.

Guild Exhibits: "Aurora Borealis"-- the northern lights, ever changing, always in motion, a whisper of color and never the same.

Special Exhibit: "Re-use, Re-new and Re-cycle"-- use any medium to demonstrate how easy it is to be "green."

Member's Exhibits: "Natural Elements"

- Wood--(The strength of our craft). Fabric, Rugs, Linens
- Water--(Use it) All Felting - wet, needle, knitted or woven and felted pieces
- Wind--(Things to wear) Clothing ,Hats, Scarves
- Weft--(Creative threads) Tapestry, Painted wefts and warps, Three dimensional, Handspun wefts
- Wondrous Copper, Agates, Greenstone--(Any fiber) jewelry, wire weaving, beading, knitting, embellishments

Please reserve the dates on your calendar (June 19-25, 2011) so you can be inspired by the awesome beauty, peace, and solitude of the Upper Peninsula, enjoy the fun of finding small treasures on their shores, and delight in the tastes of their pasties and thimbleberries. We look forward to seeing you in the Upper Peninsula of Michigan next summer!

You can find this list of events, with clickable links, on our website. And please let us know of any events in your area that we can add.

A Brief History of the Midwest Weavers Association

The first five gatherings of this organization were organized by Evelyn DeGraw and Marjorie Whitney of the Department of Design, University of Kansas, and were held on the Lawrence campus from 1954-1958 and called Midwest Weavers Conferences.

In 1959 the Kansas City guild organized the gathering at University of Kansas City. At this meeting the name Midwest Weavers Conference was formally adopted. To establish a treasury to cover any conference shortfalls and to encourage other guilds to take on sponsorship of the conferences, dues were collected: 60 people from 5 states (KS, IA, MO, NE, OK) paid \$2 and became Charter Members.

Kansas City sponsored the 1960 conference, followed by Tulsa (1961) and Des Moines (1962); these conferences continued to be held at the University of Kansas City. In 1962 the first discussion of a need for start-up funds and a constitution and by-laws appears; the latter were ultimately adopted in 1967.

Early conferences featured one guest speaker (some of these were: Berta Frey, Mary Snyder, Mary Pendleton, Budd Stalnaker, Else Regensteiner), guild exhibits and a style show. In 1964 the conference fee was \$10; this included lunch, but the banquet was extra! Style show categories that year were: "suits, coats, skirts, dresses—after 5,

dresses—street, men's apparel, miscellaneous ladies' apparel and children's apparel."

Another year the program included a panel discussion entitled "The Great Debate: Original Weaving vs. Book Weaving." Some conferences offered demonstrations on such topics as bobbin lace, macramé, tapestry techniques and spinning. The first commercial exhibits appeared in Denver in 1966 (American Craftsman's Council, Burg's of Lund, EB Bosworth, Countryside Handweavers, EE Gilmore, Mary Pendleton, Paula Simmons, Robin & Russ and Studio Knit Center).

Initially the organization was governed by a permanent secretary and treasurer with president and vice president being chosen from the guild sponsoring the next conference. Henry Hoffman of Shawnee, KS, served as secretary from 1952-1970. Marjorie O'Shaunessy came on board in 1971 as secretary/treasurer.

In 1980 new by-laws were adopted which changed the name of the organization to Midwest Weavers Association and established a Board of Directors; Midwest Weavers Conference refers to the conferences specifically.

By MWC 1982, Ames, IA, guest speaker was Gerhardt Knoedel (Cranbrook Academy of Art), there were 39 mini-sessions, 6 maxi-sessions, 11 demonstrations, 20 guild exhib-

its and 20 vendors; attendance was just under 650.

Conferences continued to be held annually until 1991; at that time it was decided to hold them in the off-Convergence years. By 1980 the mailing/membership list had grown to 6000 names and was impossible to manage—many members had become inactive, moved with no forwarding addresses, passed on, etc. Conferences at that time often had 500-600 attendees. Today we have an up-to-date membership list maintained by a Database Manager. Conference attendance has been 250-300 in recent years. Since 2005 the board has put forth a great deal of effort toward assisting the host guilds in every way possible beginning with putting together a booklet of conference guidelines and moving forward with web presence and more communication with members through newsletters, the website and email.

So.....how old are we? If you count back to the first gathering at Lawrence in 1954, we are 56 years old. If you begin with the first guild-sponsored meeting in Kansas City in 1959, we are 51 years old. If you count from the adoption of our constitution and by-laws, we are 43 years old. If you count conferences, our up-coming conference MWC 2011 "Northern Wefts" in the UP of Michigan will be our 47th Midwest Weavers Conference. Our 50th con-

(Continued on page 7)

**Do you know
how we got
here? MWA has
a rich history
with many of the
most famous
weavers of the
2nd half of the
20th century
holding starring
roles.**

Coming for 2011 ONLINE REGISTRATION

The Board has decided to ask the planning group for *Northern Wefts* to include the option for on-line registration.

We hope that this will be easier for many people. It will provide the option to pay with a credit card via a secure site, and on-line registration will allow you instant feedback regarding the availability of your first choice workshops and classes.

In addition, the on-line registration program provides for a wide variety of reporting options which will be very helpful to the planning committee.

But not to worry – if you prefer to use the paper form from the registration booklet to be mailed later this year, that's fine too.

Eventually, we hope to switch completely to on-line registration but, at least for this conference, we will be accepting mail-in registrations as well. Forms that arrive by mail will be integrated into the registration process as of the date that they are received.

Announcing MWA Conference 2013

Fiber Frontiers is being hosted by the Kansas Alliance of Weavers and Spinners and will take place the week of June 16 at Emporia State University, Emporia, Kansas. As we learn more, we'll be sure and let you know. Meanwhile, please reserve some time on your calendar, so we can see you in Kansas at what promises to be another interesting and stimulating MWA conference!

Midwest Weavers Association Web Site

- Want to know about upcoming fiber events that are taking place near you?
- Read past MWA newsletters?
- Join MWA or renew your membership?
- Change your mailing address with MWA?
- Learn about the 2011 MWA conference *Northern Wefts*?

Answers to these questions and more can be found on MWA's web site www.midwestweavers.org. We hope you'll visit it often! We also hope you'll send in info about fiber activities happening in your area, so that we can post the details on the web site and others will be able to participate in them.



MWA Scholarships... additional scholarships available

At its recent meeting, the MWA Board voted to significantly increase the number of scholarships it awards to conference attendees.

In addition to the Jack Baker Scholarship, which provides conference registration fees, housing, and meals for a weaver with less than five years experience, two similarly comprehensive scholarships will be awarded based on financial need.

The scholarship committee may also award several conference fee-only grants, the total not to exceed 12.

One motivation behind this increase in scholarships is the desire to increase the number of first-time attendees and to encourage the return of those who have not attended a Midwest Weavers Conference for many years.

While any individual member may apply for the scholarships, there is now also a provision for second-party nominations.

Is there a faithful member of your guild who has never attended Midwest?

Do you know of someone currently out of work whose sanity has been saved by their fiber interests?

These are the folks we hope our members will bring to the scholarship committee's attention.

Instructions for applying for the scholarships and the application deadline will be available on the conference website.

If you have additional questions, please contact, Betty Huttner, scholarship coordinator. (Please see page 2 for her contact information.)

(Continued from page 5)

ference will be the one scheduled for 2017! So anyway you count it, we are doing well!

Below are the locations or sponsoring guilds for each of the conferences:

1954 Lawrence, KS	1973 Denver, CO
1955 Lawrence, KS	1974 Minneapolis, MN
1956 Lawrence, KS	1975 Kansas City, KS
1957 Lawrence, KS	1976 Naperville, IL
1958 Lawrence, KS	1977 St. Louis, MO
1959 Kansas City, KS	1978 Cincinnati, OH
1960 Kansas City, KS	1979 Milwaukee, WI
1961 Tulsa, OK	1980 Lake Forest, IL
1962 Des Moines, IA	1981 Columbia, MO
1963 Topeka, KS	1982 Ames, IA
1964 Lincoln, NE	1983 Berea, OH
1965 Wichita, KS	1984 St. Paul, MN
1966 Denver, CO	1985 Bloomington, IN
1967 Columbia, MO	1986 Denver, CO
1968 Tulsa, OK	1987 Lawrence, KS
1969 Kansas City, KS	1989 Cincinnati, OH
1970 Des Moines, IA	1990 Pittsburgh, PA
1971 St. Louis, MO	1991 West Lafayette, IN
1972 Lincoln, NE	1993 Cedar Falls, IA
1973 Denver, CO	1995 Milwaukee, WI
1974 Minneapolis, MN	1997 Canton, OH
1975 Kansas City, KS	1999 Bloomington, IN
1976 Naperville, IL	2001 St. Louis, MO
1977 St. Louis, MO	2003 St. Louis, MO
1978 Cincinnati, OH	2005 Sheboygan, WI
1979 Milwaukee, WI	2007 Omaha, NE
1980 Lake Forest, IL	2009 Grinnell, IA
1981 Columbia, MO	
1982 Ames, IA	
1983 Berea, OH	
1984 St. Paul, MN	
1985 Bloomington, IN	
1970 Des Moines, IA	
1971 St. Louis, MO	
1972 Lincoln, NE	

by Vicki Tardy

FIBER ARTIST OF DISTINCTION

We have many talented weavers in MWA and have established a new award to honor them.

This award is based on a point system, and when a weaver has accumulated 25 points, they will receive the Fiber Artist of Distinction Award. Points will be earned by receiving either 1st place or a named award (3 points), 2nd place (2 points), or 3rd place or honorable mention (1 point) at MWA conference competitions.

Once a person has received the Fiber Artist of Distinction Award, their name will be published in the next MWA newsletter and will be added to the honor roll that will be posted on MWA's web site.

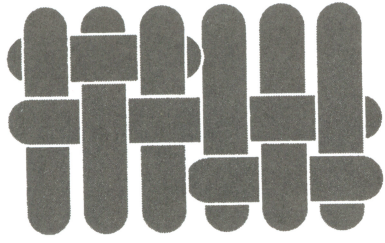


Change of Address?

If you're planning to move, please send your new contact information to:

Amy Norris
8742 Teasdale Ave.
St. Louis, MO 63124

Email:
amy@amyfibre.com



Midwest Weavers
ASSOCIATION, INC.

The official newsletter of

Midwest Weavers' Association
c/o Amy Norris
8742 Teasdale Avenue
St. Louis, Missouri 63124-1926

E-mail: amy@amyfibre.com

