

Letter from the Chair

Greetings to all Midwest Weavers Association Members,

Times have changed since the \$2 lifetime membership dues were established. Not only have the mailing costs increased but also Midwest has increased its activities. There is a newsletter, a web site (*in process*), database manager, and conference planning support. Midwest continues to provide funds for awards for entries in the members' show, fashion show, and guild displays as well as funds to the host guild. Scholarship awards have also been increased. Some of you might disagree with this change because you joined for *life*. But think about what your \$2 has accomplished since

you joined MWA and what you want for the future. I hope the future brings your continued involvement in conferences, information and fiber arts education. I know you will continue your support of the MWA and encourage others interested in weaving and spinning to join us.

A special thank you to Vicki, Bobbi, Carolyn, and Patsy who have agreed to represent your interests as members of the MWA Board of Directors. They all share commitments to the fiber arts as spinners, weavers, teachers, vendors, and now board members. Their extra time, energy, and enthusiasm are greatly appreciated. Be sure to share

your ideas and hopes with them.

Now we look forward to returning to our "Roots" for Midwest Conference 2007. At the formation of MWA conferences were held in Kansas and **Nebraska** for many years. This conference provides the opportunity for us to honor our mentors and learn new techniques. Won't this be an exciting conference? I look forward to seeing many of you there.

If you have any ideas, questions, or concerns please call, write, or e-mail me. Until then ...enjoy your art.

Judith Larsen
MWA Board Chairman

Midwest Weavers Association (MWA) Conference

A BIG thanks to the Shuttlecraft Guild of Sheboygan and Wisconsin weavers for hosting an absolutely terrific MWA conference! *Waves of Weaving (WOW)* was held June 12-18, 2005 at Lakeland College near Sheboygan, Wisconsin. Participants were "WOWed" by the weaving, spinning, dyeing, and other fiber-related items

from all over the country. Daryl Lancaster inspired and entertained during her keynote address and the fashion show. Thanks also to the many instructors, vendors, and participants who contributed to a wonderful time of learning, meeting new friends, and reacquainting with old friends. Thank you Sheboygan, Wisconsin!

Inside this issue:

Board Members	2
2007 Conference Info	2
2005 Award Summary	3
Swatch Swap Update	4
Scholarship Opportunities	4
Dues Renewal Form	5

Minutes from the June 16, 2005 MWA General Membership Meeting

Meeting was held in Bradley Hall Auditorium at 7:00 p.m.

The Sheboygan guild hosts were recognized and thanked for organizing and running a great conference.

Meeting was called to order by Judy Larsen, chairman.

Committee reports

Amy Norris, data base manager, gave a report on membership.

We have 4,724 active members. There were two notebooks in the hospitality room with a complete list of the membership. Everyone was asked to review the list of members in their area and make corrections.

Nominating committee – Jeune Baker and Linda Flotow.

Jeune nominated Patsy Ek for a term of six years.

Linda nominated Judy Larsen for a term of six years and Carolyn Hart for secretary for a term of four years.

Vicki Tardy was appointed to a term of two years.

All nominations were accepted and unanimously approved by the membership.

Bobbi Humphrey-Stephens gave the treasurer's report. There is a total of \$52,043.52 in the treasury.

Judy Larsen reported that the by-laws have been revised.

Dues will now be \$5.00 per year payable every two years on a non-conference year.

There will be a newsletter sent to all members.

Discussion was held concerning distributing the newsletter via email. At this time the newsletter will be mailed to everyone.

Judy also announced that the next conference will be held in Lincoln, Nebraska in 2007 and in Iowa at an undetermined location in 2009.

The meeting was adjourned.

MWA Board Members

Judith Larsen, Chairman
N67 W5349 Cedar Court
Cedarburg, WI 53012
(262) 377-5767
ljudithwve@aol.com

Bobbi Humphrey-Stephens,
Treasurer
9046 N. Regent Road
Bayside, WI 53217

(414) 736-0496
NSTEPHENS24@wi.rr.com

Carolyn Hart, Secretary
Rt. 3 Box 731
Vandalia, IL 62471
(618) 326-8655
chart@swetland.net

Patsy Ek
Bloomington, Indiana
(812) 333-5211
pek@indiana.edu

Vicki Tardy
4608 Oak Crest Hill Road SE
Iowa City, IA 52240
(319) 351-5208
vtardy@zeus.ia.net

Please feel free to contact your MWA Board members with comments and suggestions.

“Roots” Midwest Weavers Conference June 20-23, 2007

Looking ahead to 2007...

From the moisture, soil, and sun that nourishes our fibers to the ancestors who give us spirit, these mystic ties to our sacred prairie culture are the

basis of “Roots.” You are invited to cross the Great Plains of the Midwest to the campus of the University of Nebraska at Lincoln to plant the precious seeds of mem-

ory, love, and hope, so that one day they may grow and flower in our craft and art. We're looking forward to seeing you in June 2007!



Midwest Weavers Conference 2005 Awards

Fashion Show:

Margaret Grant Memorial Award: Vita Kakulis (\$150)
 MWA Award - Daryl's selection: Lisa McLane (\$100)
 MWA Award - WOW Award: Tina Grogan (\$125)
 MWA Award - Splash Award: Ann Kastl (\$100)

Honorable Mentions:

Marcia Kosmerchok (Twill and Tuck patterns donated by Linda Kubik)
 Jan Macklin (The Fiberarts Book of Wearable Art donated by Fiberwood Studio)

Informal Fashion Show

Viewers' Choice Awards:

1st place: Pat Jordan (Yarn donated by Huacaya Moon)
 2nd place: Karen York (Book donated by Bahr Creek Llamas and Fiber Studio)

Individual Enrichment Awards:

Each person received \$50:
 Charlotte Erdmann,
 Kathy Hetrick
 Sherri McNish
 Judy Santner,
 Ginny Thompson

Guild Exhibits:

Margaret O'Shaughnessy Award for 1st place: Far Flung Weaver's Guild, Wisconsin (\$100)
 2nd place: Sand County Shuttle Guild, Wisconsin (\$75)
 3rd place: Bloomington Spinners and Weavers Guild, Indiana (\$50)

People's Choice: Weaving Indiana (\$50)

Enrichment Awards: Woodstock Weavers Guild, Illinois (\$50)

Prairie Weavers Guild, Illinois (\$50)

Members Exhibits:

Libbie Crawford Memorial: Mary Dalhaimer (\$150)

Elsie Bell Award for Handspinning: Pat Maley (\$100)

Mary Unger Award: Kathryn Smith (\$50)

Handwoven's Weaving for the Home: Nancy Frantz

HGA Award of Merit: Vita Kakulis

Complex Weavers Award: Edith Brulla

Home Furnishings:

1st place: Nancy Frantz (\$70)
 2nd place: Sue Balde

Accessories:

1st place: Judith Larsen (\$70)
 2nd place: Mary Dalhaimer

Two-Dimension Wall Hangings:

1st place: Rebecca Simon (\$70)
 2nd place: Lois Demmin

Innovative Creations:

1st place: Edith Brulla (\$70)
 2nd place: Ruth Gerstner

Rugs:

1st place: Nancy Frantz (\$70)

2nd place: Marcia Kosmerchok

Garments:

1st place: Sue Balde (\$70)

2nd place: Marcia Kosmerchok

Complex Weave:

1st place: Sigrid Piroch (\$70)

2nd place: Helen Stoerzinger

Three-Dimensional Object:

1st place: Rose Rubin (\$70)

2nd place: Mary Dalhaimer

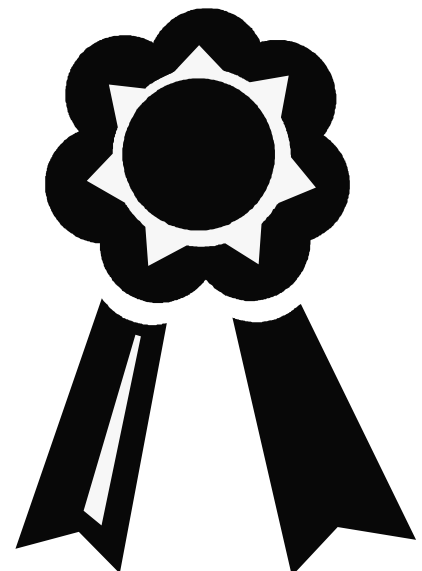
Felting:

1st place: Pat Jordan (\$70)

Handspun Creations:

1st place: Pat Maley (\$70)

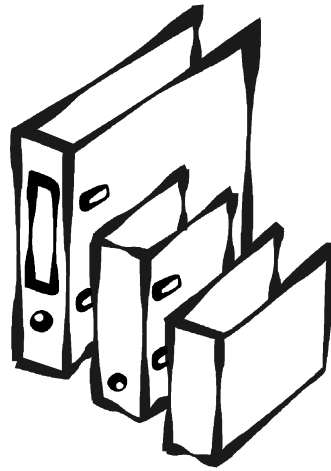
Congratulations to all the artists who participated in the exhibits and shows at Sheboygan!



Swatch Swap

Swatch swap books from the last two MWA conferences are available for loan to members for up to three months. The only cost involved is for the member to pay return postage. To request one of these books, please contact Judith Larsen (see board contact list).

Is there a swap exchange in your future? If you would enjoy a book of samples to touch and feel, start thinking now about participating in the swatch swap in 2007.



Weaving samples should be approximately 4" x 4," and you should prepare 20 sam-

ples for each category you wish to participate in. Categories include: 2-4 harnesses, 5-8 harnesses, and spinning.

Spinners: we have had few contributions in the last years. Do you want to continue the spinning swap? Tell Judith Larsen.

Everyone who participates in the swatch swap will be entered in a drawing for a vendor gift certificate (one certificate will be awarded in each category).

Jack Baker Memorial Scholarship

This scholarship is named for Jack Baker, who served as MWA treasurer for a number of years and as a co-chair for the 1999 MWA conference in Bloomington, IN.

Because he was a friend and always encouraged people to be involved in weaving and spinning, this scholarship is intended for a MWA member, who has been weaving five years or less, and covers

the registration fee, room, and board for a Midwest conference.

Amy Twadell was the inaugural recipient (2005) of this scholarship.

Did you know there are scholarships available to help you or someone you know attend MWA conferences?

MWA Registration Scholarships

Up to six scholarships will be sponsored by the MWA for each Midwest conference.

These scholarships are available to members that need

financial assistance and will help defray costs by covering the conference registration fee.

For further information about scholarships, please contact Vicki Tardy (see board contact info).

Annual Dues

At the membership meeting in Sheboygan, 2005, members initiated a change in dues. They will be \$5 per year and *payable every two years*.

Instead of paying dues with conference registration, please complete the enclosed form and return it with your check (\$10) payable to

"Midwest Weavers Association." These dues are for 2006 and 2007.

MWA Membership Dues for 2006 and 2007

Name _____

Address _____

Telephone _____

Name and address of guild(s) you participate in _____

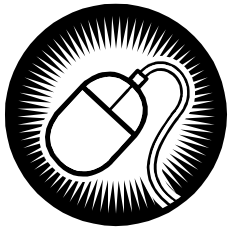
Amount enclosed. Please make checks payable to "Midwest Weavers Association".....\$10.00

Please send this form and your check to:

Amy Norris
8742 Teasdale Avenue
St. Louis, MO 63124

Thank you! See you at Midwest 2007 in Lincoln!

IMPORTANT — to continue receiving mail about future conferences, please send in your dues today. Thanks!



Web Site

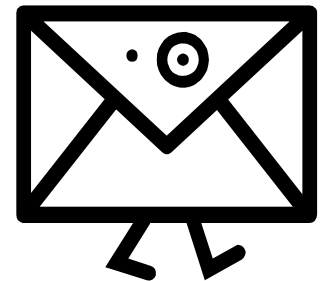
Nancy Simonson, Wisconsin, is developing a web site for MWA. It will be available for any announcements of weaving classes, programs, workshops, awards, photos that you or your guild wishes to include. Please send your information to weaver1013@aol.com. Thanks.

Address Changes

If you move, please let us know by sending your new mailing information to:

Amy Norris
8742 Teasdale Avenue
St. Louis, MO 63124

or send her an e-mail at: amy@amyfibre.com. Thank you!

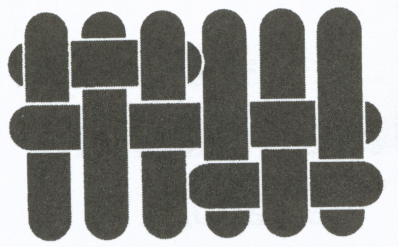


Helpful Tips

from Weavers' Wisdom: 250 Aids to Happier Weaving, Monograph Two

- Always put on an extra yard of warp. It's easy insurance against disaster, provides material for samples, and using it up gives opportunity for ingenuity and experiment.
- The width of the warp on the back beam should be somewhat wider than the width in the reed, particularly when using fine yarns.
- For two shuttle weaving, a matched pair of shuttles will help to keep rhythm and beat even.
- For sampling, keep on-hand cones of natural cotton or wool in a variety of sizes. Small amounts are easily dyed

(Continued on page 6)



Midwest Weavers
ASSOCIATION, INC.

The official newsletter of

Midwest Weavers' Association
c/o Amy Norris
8742 Teasdale Avenue
St. Louis, Missouri 63124-1926

E-mail: amy@amyfibre.com

Coming soon:
MWA's website

More Helpful Hints

(Continued from page 5)

for particular experiments and less investment and time required.

- Preshrinking wool yarn before weaving

yardage will improve the selvages, give a more reliable weft, and the fabric will react to washing more predictably.

- Pieces sent for exhibit should be accompanied by full directions for hanging and include necessary hardware. Label pieces and accessories.
- Use numbers instead of symbols when drafting to minimize errors.
- For a quick conversion between yard and meters, remember that one meter is about

10% longer than one yard. For smaller units, four inches equal ten centimeters.

- For softening and fluffing rug yarn, place in a Chinese or lobster steamer. Dries quickly, too.
- A small table loom can be equipped with a handle on the top of the castle to make it more easily portable.

